

# Lake of Bays

HIGHLANDS  
*of* ONTARIO

**GRAND  
TRUNK  
RAILWAY  
SYSTEM**

# Lake of Bays

HIGHLANDS  
*of* ONTARIO

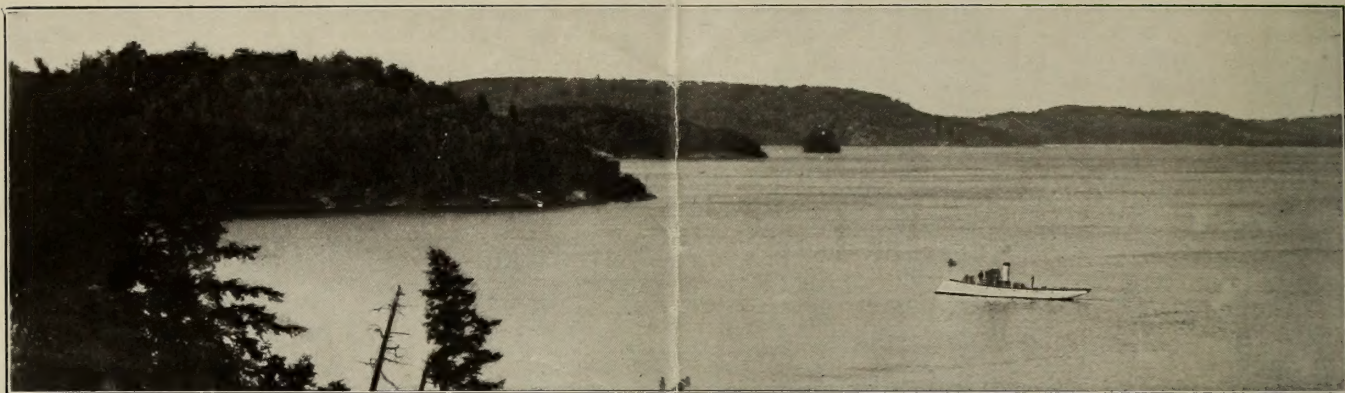


**Grand Trunk Railway System**

**Grand Trunk Railway System**



# THE LAKE OF BAYS



On the Lake of Bays

## THE LAKE OF BAYS

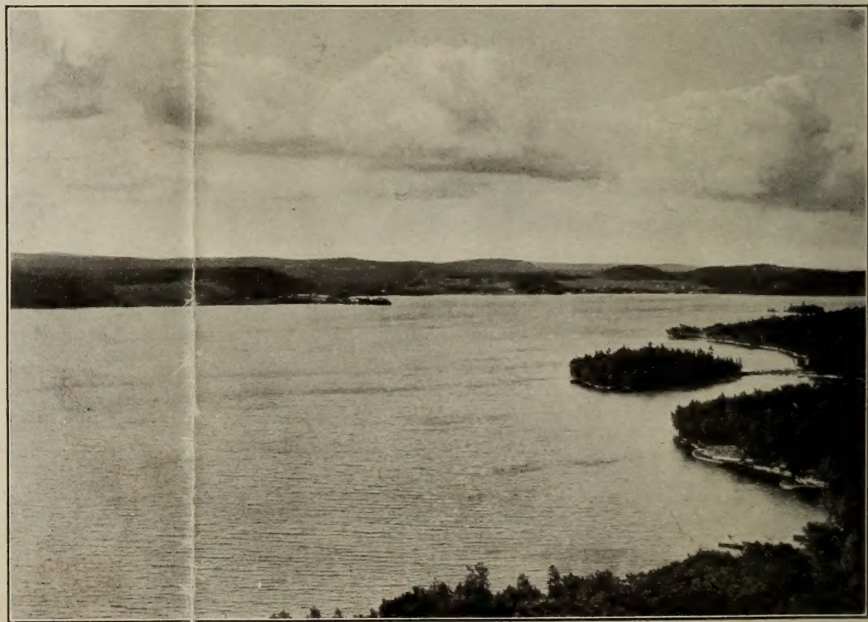
Perhaps nowhere in the history of the "Highlands of Ontario," or anywhere in Canada, is there an outing place which has been such a signal success as the Lake of Bays District. While it is true that a number of small hotels and cottages have existed here for some time, the real "start" was made in 1908, when the spacious Wawa Hotel was opened at Norway Point.

Lake of Bays scenery is rugged enough to be romantic and yet restful to the eye. The altitude, 1,000 feet above the sea, makes the spiced air rare and invigorating. The skies are usually clear and beautifully blue, but not the endless, cloudless blue that arches the arid wastes of desert lands; which becomes as tiring in times as the almost endless rains of tropical climes. In fact, there is just sufficient rain in this well-ordered region to freshen the foliage and keep the grass growing green.

The Lake of Bays is only one, but the largest one, of a number of lakes, some of them linked, one to another, by locked rivers, and some by open free-flowing streams. Upon these lakes are pretty little electric-lighted boats, whose powerful searchlights seek out the dappled shore-rocks and the dark nooks where the ferns and foliage bend low as if to catch the whisperings of the soft cool waves that lap the land. When one of these boats, with an Indian name, takes a party of tourists for a night run through these winding waterways, they call it a searchlight excursion through fairyland.

One distorted figure in a picture would render the whole canvas worthless. One false note will kill the chorus, and one bad spot on the route, or a single mishap, will often mar the pleasure of a summer's outing. In his going and coming, and what time he tarries, your tourist wants everything to run as smooth as the gliding of a swan on a moonlit lake. All this the management has had in

mind when providing the luxurious trains upon which the patrons of the Grand Trunk Railway System travel over their splendid double-tracked line from Chicago, Detroit, Buffalo, Boston, Portland and Montreal, and the handsome special Highland service from Toronto north to the Lake of Bays. These special trains run right down to the wharf at Huntsville, which is only 145 miles north of Toronto, and the traveler steps from the train to the steamer, which steams away at once down Fairy River,



From Bigwin Island opposite the "Wawa"



across Fairy Lake, thence through a narrow twisting channel to Peninsula Lake and across the latter to Portage.

Here passengers board the tiniest and shortest real railway on the continent operating regularly as an independent line. At the other end of this little railway, only a mile away, you board another beautiful lake steamer which takes you across the Lake of Bays to the "Wawa," but calling at many delightful resorts en route. The shores of this lake are lined with smaller hotels and cottages and new summer houses are being built every year. The travel to the "Highlands of Ontario" has increased from a few thousand to over 50,000 annually within the

point along the system may be reached, and the acility with which, from the solitude of primeval forests, deep glades, mountain dells, babbling brooks and enchanting lakes (the haunts of fish and game), the tourist may find a base of supplies, together with the superiority of the scenery, are among the causes rendering these lakes such favorite camping resorts.

**Fish abound.**—Speckled trout, salmon trout and black bass are plentiful in these waters, while whitefish, salmon trout and speckled trout are found in great quantities in the waters of the surrounding lakes. As a field for the geologist and mineralogist, the district is interesting. Wahawin, a delightful resort consisting



The Wawa Hotel—Norway Point

past few years, and to no other district has the increase been greater than to the Lake of Bays.

**Dwight Bay.**—A particularly charming spot is Dwight Bay, with its green shore curving caressingly around it, and sloping gently and gradually back, sheltering groves with open evenness running down to the water's edge. Dwight is its own best advertisement. The bay walled in on three sides is as safe for the canoeist as the shallow beach is for bathers.

On the west shore the dark-wooded mainland rises abruptly, while the river comes singing in from the east. Always there will remain with you the memory of Norway Point, Point Ideal, Bona Vista, Britannia, and more distinctly still, Dwight Bay the Beautiful.

The Huntsville District affords every variety of scenery. The calm pastoral of Vernon, the romantic and ragged mountainous grandeur of Hollow, the fine bathing and quiet scenery of Lake of Bays, and the picturesque beauty, coupled with the unsurpassed fishing and hunting along the entire chain, lend to these waters an attraction and a charm. The ease with which any

of 140 acres, has a frontage on the Lake of Bays. Beginning at a fine shelving beach, it rises in natural terraces seventy to eighty feet to a plateau above, and is wooded on the slope with the choicest of hardwood trees. The location commands one of the finest views on the lake. Cottages are available here, also fine locations for cottage sites. Cottages equipped with own private system of waterworks. For full particulars as to sites for sale and cottages to rent, address W. J. Green, 3 Whitney Avenue, Toronto, Ont.

**Lake Vernon and Mary Lake.**—Lake Vernon and Mary Lake are also beautiful stretches of water. The scenery along the shore of Mary Lake is rugged and wild, as there are many islands and a number of picturesque hotels along the shore, notably "Grunwald," etc., and Clyffe House at Port Sydney. First-class accommodation at the several principal resorts at moderate rates. A stage is run between Utterson and Port Sydney, and connection is made from the latter place with steamer for other points on Mary Lake.

Lake Vernon lies to the west of Huntsville. It is dotted with



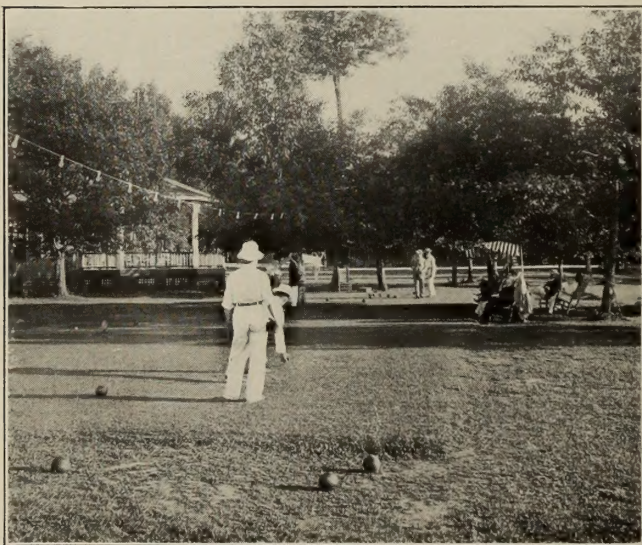
## THE LAKE OF BAYS

islands and lies in a beautiful setting with high hills on the surrounding shores. Camp sites are numerous. The islands and shores are heavily clothed with verdure, and a sail through the labyrinth of islands is a trip never to be forgotten. This part of the district is sparsely settled and it is just the out-of-the-way sort of place for those desiring exclusiveness.

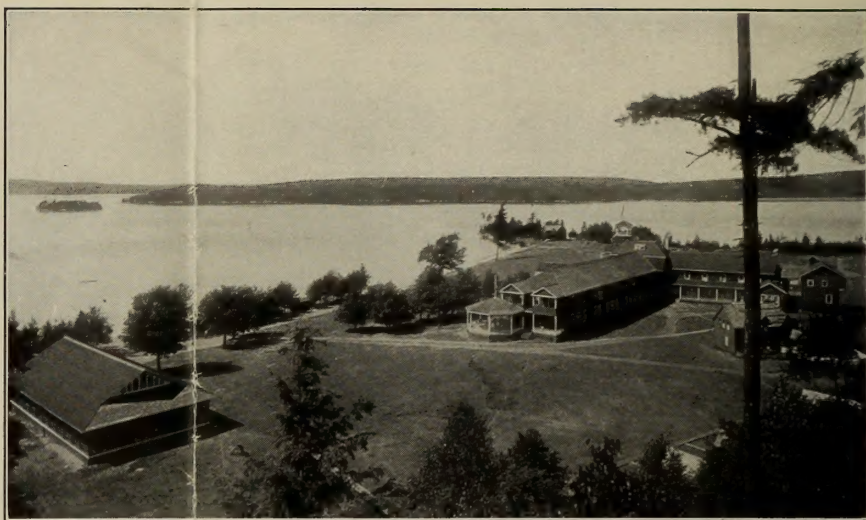
### THE "WAWA."

This charming hotel was designed especially for the accommodation of those who do not wish to be bothered with the cares of house-keeping, and desire the rest that is found in a life of ease at a resort where the comforts of home are found without the worry and cares of city life. This new hotel was named the "Wawa," which is the Indian word for the "Wild Goose." It contains 153 rooms, arranged so that they may be occupied singly or en suite. Besides the numerous baths with hot and cold water that are found on each floor and which are for the use of the guests free of charge, there are forty luxurious private baths in connection with bedrooms en suite, a feature very much appreciated by patrons. Hot and cold running water in each bedroom. A tent auxiliary has also been provided for those who prefer more outdoor life, and meals are taken in the hotel.

The hotel is electric-lighted, and a powerful searchlight has been placed on top of the dome of the hotel, which will cast its rays over lake, wood and island scenery during the evenings. This is a novel and interesting feature, new to Canada,



Bowling Green—The "Wawa"



The "Wawa" from Grounds in Rear

and one that is very popular at leading resorts in Switzerland.

The bedrooms are larger than the average rooms found in summer hotels, the majority being 14 x 16 feet. They are all outside rooms, that is, each room has its own windows looking on woods or lake, are bright and airy, with hardwood floors and pretty rugs, and the furnishings in keeping with the comforts that are provided by the management throughout. The whole house is furnished with either brass or white enamelled beds, with the finest quality of linen, rugs, etc., etc. The majority of the rooms contain two single beds. Every room is provided with a large clothes closet—a feature which will be appreciated by guests.

The structure is built after the cottage style of architecture and rises to a height of two stories only. On the first floor, on entering, is found the spacious rotunda and sitting room, also the office. This room is large and is the favorite spot for "loafing." Large open fireplaces have been provided in the sitting rooms and rotunda, where the log fires burn when needed on a cool morning or evening in the early or late part of the season. Upstairs, in addition to the suites of bedrooms, will be found ladies' parlors, writing rooms and cozy corners.

The dining room extends from the rotunda to the rear of the building, and is a large, bright room, lighted from both sides, and with a seating capacity for 300 people. The cuisine is under the supervision of an experienced chef, and it is the object of the management to see that the table service is satisfactory to the most fastidious. A smaller dining room is connected with the main dining room for the use of children and nurses or for small evening gatherings or private parties.

Directly in front of the building on the ground floor and second floor are spacious verandas, from which the most picturesque views of lake and island scenery in all directions can be enjoyed by the observer.

Amusements are provided in the way of boating, bathing, croquet, tennis, baseball, football, bowling on the green, quoits, etc., while the golf grounds of the Norway Point Golf Club are



# THE LAKE OF BAYS

available for the use of the guests of the hotel. So bring your bowls and golf clubs along. Evening concerts and dancing to the strains of the Wawa orchestra wind up the busy day.

It is the purpose of the management of this new hotel to offer the maximum of comfort and service at a reasonable rate, and the charges have been made to meet the most modest pocket book, as well as those wishing more pretentious surroundings.

Sufferers from tuberculosis are not admitted.

The regular evening hop is free to all and a refreshment booth has been added to the pavilion as an additional attraction. A double-daily boat service is maintained between Huntsville and the "Wawa," and a double daily mail service.

A special feature in connection with the hotel is the pure spring of clear water—this is on the hotel property and from which the hotel supply is drawn. This water is absolutely pure, as clear as crystal, and is considered one of the best assets of the

15th and September 10th, to the Manager, the Wawa Hotel, Norway Point, via Huntsville, Ontario.

## PRINCIPAL POINTS.

**Huntsville.**—The town of Huntsville, on the Toronto-North Bay line of the Grand Trunk Railway, 146 miles north of Toronto, is ideally located in the heart of Canada's most beautiful tourist region, "The Highlands of Ontario," and is known as "the Gateway to the Lake of Bays District."

It is here that the tourist leaves the train and embarks upon the Huntsville and Lake of Bays Navigation Company's commodious and well-appointed steamers for the far-famed "Switzerland of America," viz., the Lake of Bays region.

Huntsville is charmingly situated on Muskoka River and is the connecting link between two beautiful lakes, Vernon and Fairy.



Huntsville—Gateway to Lake of Bays Region

resort. The hotel is situated on a flat plateau at the foot of a well-wooded bluff rising to a height of about 150 feet, and from whose summit a grand view of the surrounding country can be had. A government road leads to the hotel and offers opportunity to those who desire a means of riding or driving.

Telephone connection to all points on Bell Telephone system, also telegraphic connection via Great North Western and Western Union telegraph companies.

The hotel is supplied with fresh milk, cream, eggs, poultry, and vegetables, and is surrounded by its own 200-acre farm.

Rates at the "Wawa" are most reasonable for the service offered, and run from \$2.50 to \$5.00 per day, or \$15.00 to \$30.00 per week, according to location of rooms.

A series of tents with board floors, electric-lighted, and neatly furnished, will be used as an auxiliary to the hotel, and comfortable accommodations can be secured at \$2.50 per day or \$14.00 per week each person.

A boat livery is operated in connection with the hotel, where the best of canoes, skiffs, sailboats, etc., can be secured at moderate prices.

For further particulars and booklets regarding the "Wawa," application should be made between September 9th and June 15th to Canada Railway News Co. (Limited), proprietors of the "Wawa," 112 Union Station, Toronto, Ontario; between June

The river winds its picturesque course through the heart of the town, and from a conveniently reached eminence known as "the Mountain," five minutes' walk from the centre of the town, a magnificent view, miles in extent, embracing the entire town, together with the river, Fairy and Peninsula Lakes to the eastward, and Vernon Lake to the west of Huntsville, may be obtained.

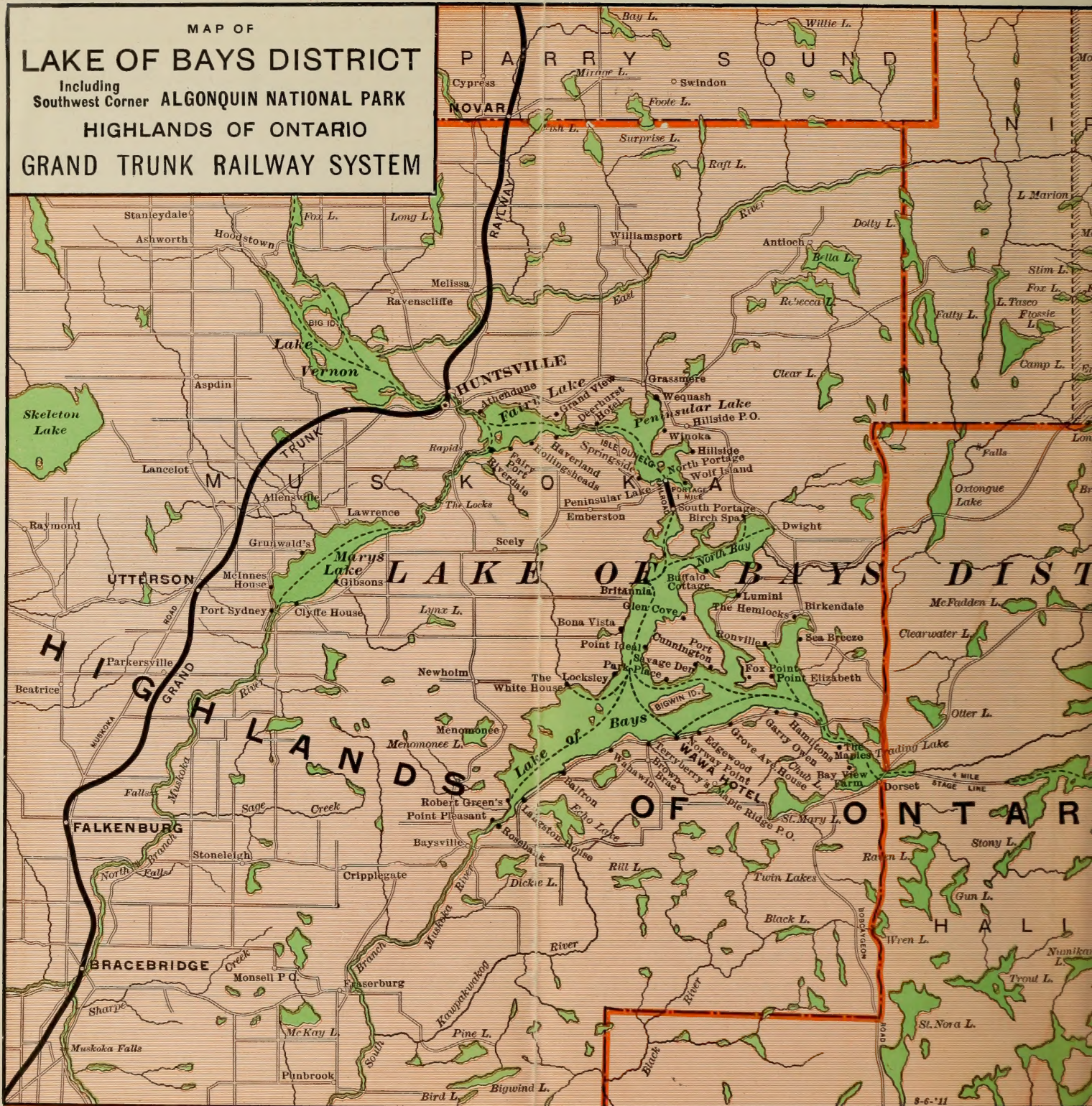
Aside from its scenic claims, Huntsville is particularly well suited to the more prosaic requirements of the searcher after health and pleasure. It has first-class train and mail service, bank, telephone, telegraph and express, and its mercantile establishments are numerous and up-to-date, carrying a full line of all the commodities of life.

Owing to the increasing popularity of Huntsville as a tourist centre, the merchants are paying special attention to this class of trade, and carry in stock anything and everything that the most exacting summer visitor could require, such as clothing of all kinds suitable and necessary for vacation wear, campers' and cottagers' supplies, fishing and boating requirements, motor boat accessories and supplies. Motor or row boats and canoes may also be purchased or rented. Thus the intending visitor need not worry and fuss in the city's heat, getting together and shipping the vacation supplies; he can get everything here, and at prices as low as in the city.

The town has comfortable and well-kept hotels, offering first-



MAP OF  
**LAKE OF BAYS DISTRICT**  
 Including  
 Southwest Corner **ALGONQUIN NATIONAL PARK**  
**HIGHLANDS OF ONTARIO**  
**GRAND TRUNK RAILWAY SYSTEM**





## THE LAKE OF BAYS

class accommodation at moderate rates, besides numerous boarding houses where the visitor's comfort is well looked after, and at very moderate weekly rates.

The Navigation Company's steamers afford frequent service to every point of this beautiful chain of lakes and rivers, with special daily excursion rates to the numerous points of interest.

Owing to the many advantages for the transaction of business in Huntsville, and its accessibility, Fairy and Vernon Lakes are yearly becoming more popular with cottagers and campers. Many people from our Canadian as well as the more distant American cities have erected beautiful summer residences here. These lakes offer safe and enjoyable facilities for boating, bathing and fishing, being sheltered from heavy winds by the numerous islands and landlocked bays.

Vernon Lake, west of Huntsville, in all its virgin splendor of towering headland, sanded beach and verdure-crowned islands, offers special inducements to the intending cottages resident, as it is just at the commencement of its development in this respect, and any number of ideal sites for summer homes may be chosen at very reasonable prices. All supplies necessary for cottage building may be purchased advantageously in Huntsville, as the manufacture of lumber and building supplies is among the chief industries of the town.

Any further information regarding Huntsville or surrounding territory may be obtained promptly by directing an inquiry to the Secretary, Board of Trade, Huntsville, Ont.

**Grunwald Summer Resort.**—"Grunwald" is a modernly constructed summer resort, situated on a magnificent elevation on the western shore of Mary Lake, down the picturesque Mary River. "Grunwald" has accommodation for one hundred guests. Its rooms are large, lofty and airy, lighted by gas. It is fitted with modern sanitary plumbing. Its tables are supplied daily with fresh garden produce, cream, milk, etc., from the farm in connection with the resort.

A good bathing beach, nicely cleared walks through the woods, tennis court, croquet grounds, good fishing and canoeing, furnish ample means for recreation.

Cottages in connection for rent; also comfortable tents can be provided for those to whom camping-out appeals. Canoes, rowboats and gasoline launches for hire.

**Britannia Hotel.**—This hotel will accommodate 150 guests. An excellent nine-hole golf links, with tennis courts and bowling greens, and an excellent bathing beach, affords abundant amusement. A boat livery is also operated in connection with the hotel, including naphtha launches, sail boats, rowboats and canoes.

Britannia Hall, an adjunct to the hotel, has accommodation for 100 additional guests. The rooms in the hall are large and well furnished, each room having a large clothes closet and hot and cold running water, and most of the rooms have private baths. There are large open fires, the building is steam-heated throughout, and lighted by electricity.

**Deerhurst**, where is situated a large and roomy hotel on a high bluff overlooking Peninsula Lake. Good boating and fishing and a charming place to spend the summer. Steamers call daily. P.O. address, Huntsville.

**Ronville.**—First-class hotel at this point, accommodating 125 guests. In the vicinity are some of the finest fishing grounds in the district. Good table, golf, tennis, mail twice daily during July and August. Boats, canoes, etc., for hire. Very fine beach. Telegraph connection with Huntsville.

**Port Cunnington**, on Lake of Bays. An exceptionally fine bathing beach, and one of the oldest established resorts on the lakes. Tennis, croquet, etc., are among the sports provided. Daily mail service during July and August. Telephone connection. Milk, cream, and garden produce supplied in abundance from own farm.

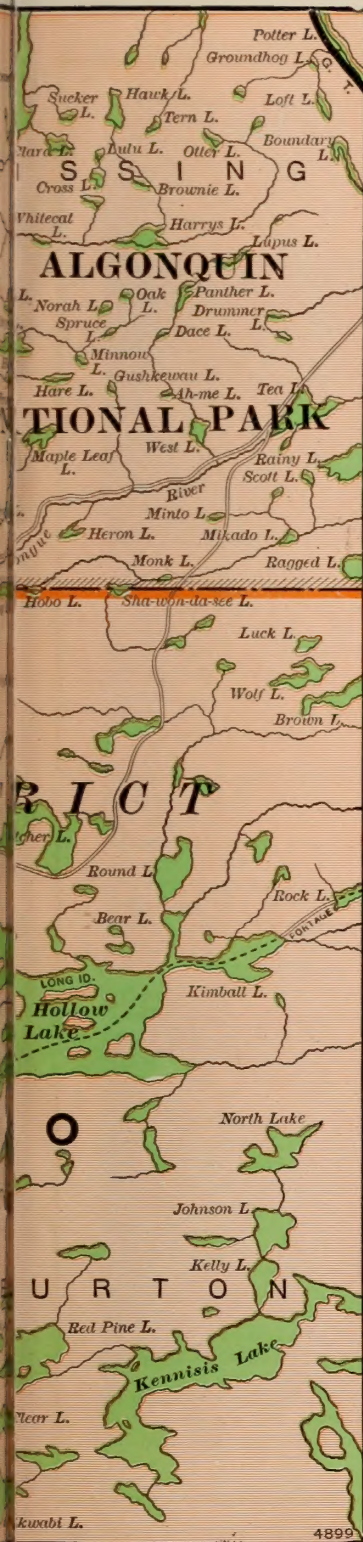
**Point Ideal.**—Located directly on line of the steamers; double daily mail service. Table bountifully supplied with cream, milk, etc., from own farm; also choice meat and vegetables. Good bathing beach, splendid fishing. Comfortable tents will be provided for those to whom camping-out appeals. For the convenience of guests a steam launch has been provided and splendid tennis court and croquet lawn.

**Grunwald Resort**, on Mary Lake, has accommodation for over 100 guests, with large, lofty and airy rooms, that are lighted by gas and fitted up with all modern sanitary arrangements. Splendid boating and canoeing trips, a good bathing beach, lawn tennis, croquet, etc., provide means of recreation. Fresh garden produce, milk, cream, fruits in season are supplied daily, and daily mail service is maintained from Huntsville during July and August.

**Baysville**, situated on the Muskoka River, is a first-class fishing point for speckled trout. Has two hotels and several boarding houses with good accommodations. Daily mail and telephone service.

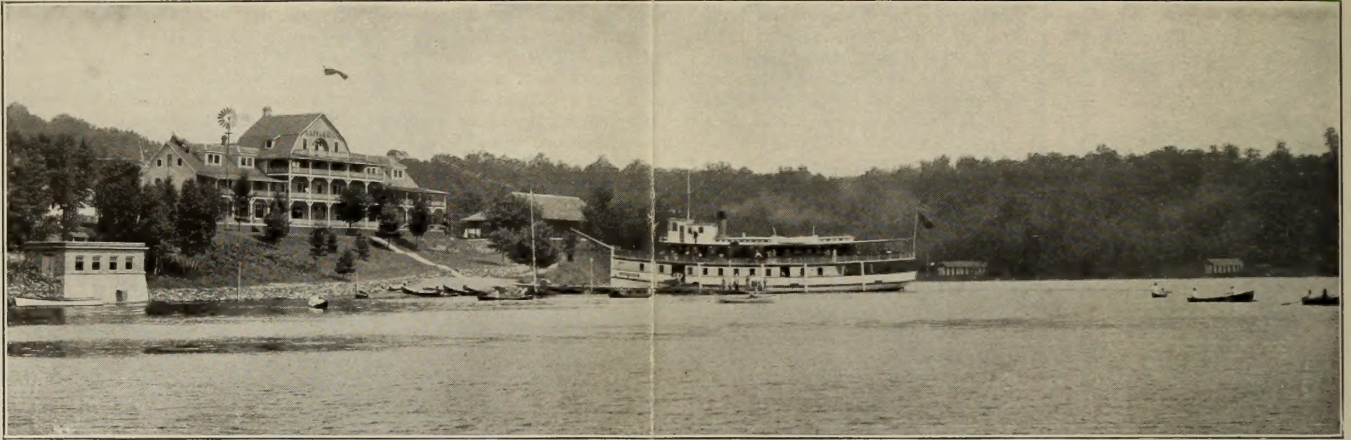
**Point Pleasant** (near Baysville), on the Muskoka River, consisting of 700 acres of woodland and small lakes and streams, has accommodation for seventy-five guests and provides excellent fishing and hunting in season. Supplies of vegetables, fruits, produce, etc., are furnished from their own farm, and lawn tennis, croquet, and baseball grounds are provided, in addition to other amusements, as well as boating, bathing, etc.

**Haverland Tourist Resort** is situated on Fairy Lake, two and a half miles from Huntsville, with accommodations for forty guests. Good boating, bathing, croquet, tennis and other amusements.





## THE LAKE OF BAYS



Britannia Hotel

**Dorset** is situated at the head of navigation on Lake of Bays; the scenery is beautiful, small lakes and streams in all directions, where the pleasure seeker can find new scenes every day. The hotel accommodation is capital, and Dorset is starting point for the sportsman's paradise—Hollow Lake and vicinity. It is one of the finest speckled trout fishing grounds in "The Highlands." Telegraph and telephone connections with Huntsville.

The Narrows Hotel, with accommodation for seventy-five guests, is situated here and is open the year round. The rooms are large and airy, and are fitted with baths, modern lavatories, etc., and lighted by gas. Good boating, bathing and fishing can readily be had, and guides are arranged for and rigs supplied for trips to Hollow Lake. Double daily boat and mail service from Huntsville during July and August, also telephone and telegraph connections.

"The Ganoseyo," also located at Dorset, is provided with a good bathing beach and good fishing ground within easy distance. The usual amusements, such as tennis, croquet, etc., are provided, and gasoline launches, boats and canoes are kept for hire. Double daily boat and mail service.

**MOTOR WAGON SERVICE.**—The establishment of a motor wagon service between Dorset and Hollow Lake by Mr. Hiram Barry, of Dorset, in connection with his livery service, is an innovation that will be greatly appreciated this season by patrons of resorts in this section. The vehicle is commodious and will be operated on regular schedule in connection with the summer boat service of the Navigation Company.

**Dwight**, situated on the Lake of Bays, has become the favorite pleasure ground for a large number of families, who each year take up their abode in this delightful district, where they are housed in private cottages. In addition to these cottages there are also good boarding houses for the accommodation of tourist travel.

Gouldie House is prominent among these. It has accommodation for about seventy-five guests, and affords a splendid sandy bathing beach and good boating, canoeing and fishing. The boat service is good, passengers being landed within 100 yards of the house. The house is modern in all respects, with baths, etc., post office, telegraph, and telephone offices within easy reach, and double daily boat and mail service during July and August.

Dwight House has accommodation for forty guests, is delightfully located, with splendid grounds for all kinds of outdoor amusements, good boating, canoeing, fishing, etc., Double daily boat and mail service during July and August, and telegraph and telephone connection.

Nor Loch Lodge has accommodation for thirty-five guests and is an ideal spot, with double daily boat and mail service, and facilities for all outdoor amusements.

**Pine Grove Inn** is picturesquely situated in a grove of virgin pines on the north arm of the Lake of Bays, a short distance from the mouth of Oxtongue River, the main water route between the Lake of Bays and Algonquin Provincial Park. Fine accommodation for fifty guests. Splendid bathing beach, tennis court, well-cleared walks and fine fishing and canoeing furnish ample means of recreation. Telephone and telegraph service, and post office close at hand. The Algonquin and Timagami Guiding Agency will provide guides, etc., for parties requiring them. For further particulars apply to Harry A. Corbett, Dwight, Ont.

**Bona Vista.**—A new colony of summer visitors have located at this point. During the last four or five seasons several beautiful summer cottages were erected; and more will be built from year to year. Cottages and sites for sale. For full particulars as to sites for sale, etc., address Rev. J. A. Brown (the Manse), Fergus, Ontario.

**Fairyport**, located on Fairy Lake, has a beautiful high sandy beach, 3,000 feet in length, nine-hole golf links, croquet and baseball grounds, also a large dancing pavilion. This resort is now under new management and has accommodation for 40 guests. The house is well equipped and modern in its appointments.

Garryowen Lodge is located about four miles from Dorset and has accommodation for twenty guests. Dairy and garden produce and fruits in season are supplied from their own farm, and the place is wholly homelike. There is a fine sandy bathing beach, good fishing and boating facilities.

"The Maples," about two and one-half miles from Dorset, nicely situated with splendid sandy beach, has accommodation for fifteen guests. All produce is supplied from own farm.

"Sea Breeze Cottage" (Ten-Mile Bay) has accommodation for twenty-five guests. It is prettily situated with a commanding view of the surroundings, with tennis and croquet grounds.



## THE LAKE OF BAYS

**Mountain Trout House.**—This resort is located about six miles from Dorset with accommodation for forty guests, and first-class bathing, fishing (speckled and salmon trout) and all other outdoor amusements are easily available. Gasoline launch and boats are kept for hire and guides procured for fishing parties.

**Port Sydney.**—The Clyffe House, situated on Mary Lake, has accommodation for ninety guests. Beautiful woods furnishing many woodland walks surround the house, and facilities for all amusements to be found at a first-class resort, including golf, tennis, bowling, boating, etc., are here, including splendid bathing beach. Telephone and telegraph communication and good boat service complete it as a desirable spot. A farm operated in connection furnishes all necessary produce.

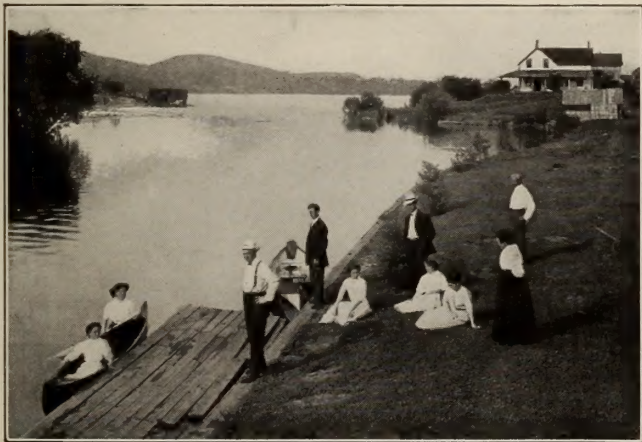
"The Balsams," Port Sydney, has accommodation for about thirty-five guests. The house has a commanding view of Mary Lake, which affords much beautiful scenery. First-class bathing beach, fishing and boating.

**Grand View.**—It has accommodation for sixty-five guests and is situated about two and a half miles from Huntsville on Fairy Lake, 100 feet above lake level, with excellent boating, fishing and bathing. It is on the steamer route plying between Huntsville and Lake of Bays, steamers passing several times daily. Long distance telephone connection. A farm is operated in connection therewith, so that guests have the assurance of the best of everything in the way of produce. House opens June 1st.

**Clovelly.**—Several picturesque cottages and a fine new pier have been built at this attractive resort within the past few months. The cottages are among the finest on the Lake, being up-to-date in every respect, and are supplied by a gravity system with pure spring water from the hills near by. Each cottage is provided with a large stone fireplace, and large verandah and balcony. Besides cottages, some choice building sites are still available at Clovelly. For further particulars apply to J. W. Tyrrell, 7 Hughson Street South, Hamilton, Ontario.

### FISHING AT HOLLOW LAKE AND VICINITY.

High up in the rugged hills, 200 feet above the Lake of Bays, lies Hollow Lake, to which one man has gone for twenty years, and from which he has taken some of the largest trout ever taken



Near Dorset

from the northern lakes. Dorset is the point where passengers leave steamer for their fishing and hunting trips to this far-famed lake and surroundings. A portage of  $3\frac{1}{2}$  miles is necessary between Dorset and Hollow Lake. Guides, canoes and supplies, etc., can be obtained at Dorset by those who desire to spend a few days fishing and hunting. Telephone connection between Dorset and "Mountain Trout House," also "Fisherman's Retreat." Mr. James Russell, who has lived at Hollow Lake for thirty years, furnishes the following information:

Trout only are caught in these waters. Species: Gray trout, 5 to 35 pounds; salmon trout, 1 to 5 pounds; brook trout (square tails), up to 5 pounds.

**GENERAL REMARKS.**—Light casting outfits good only in May. In May and early June, rubber boots are convenient. July, August and September, canvas rubber-soled shoes are best.

**SEASONS.**—May, Early June.—Brook trout in streams; flies and minnows best bait. Salmon trout in lakes; minnows used exclusively. Casting in the streams and toward shores of lakes is adapted to this month. Trolling with light sinkers in shallow water, however, gives best results. Use plain gimp hooks with No. 3 or 4 silk lines. No flies or mosquitoes.

**LATE JUNE.**—Fly fishing in rapid running rivers, fair. Creeks and streams are not good; water too warm and all species have sought the cold, deep water of the lakes. For this month using trolling outfits only, viz.; medium-sized Archer spinner with minnows, heavy sinkers and No. 2 or 3 National silk lines 200 feet long; same length Cuttyhunk lines may be used also. Strong tip steel rods preferred. Head nets and fly oil essential this month for crossing trails.

**JULY.**—Same as for late June, except there are no flies or mosquitoes.

**AUGUST.**—Same as July. During this month, fly casting may be indulged in for trout in the lakes. Silver doctor or gray hackle are good.

**SEPTEMBER.**—Same as August, but trout rise freely to the fly in lakes and streams.

There is good fishing in almost any one of the thousand lakes in the northern wilds. There seems to be no end of the supply, for when one pool is exhausted of its speckled beauties, it only needs a change of position to another spot, and up they rise with their painted sides glistening in the sunlight. On the lower lakes, such as the Lake of Bays itself, passengers on the steamers can see the trout jumping in all directions, and a morning's fishing at any point on this lake will warm the heart of the most ardent follower of Izaak Walton. Salmon trout in season are most successfully caught with the troll in the deep waters of these granite basins.

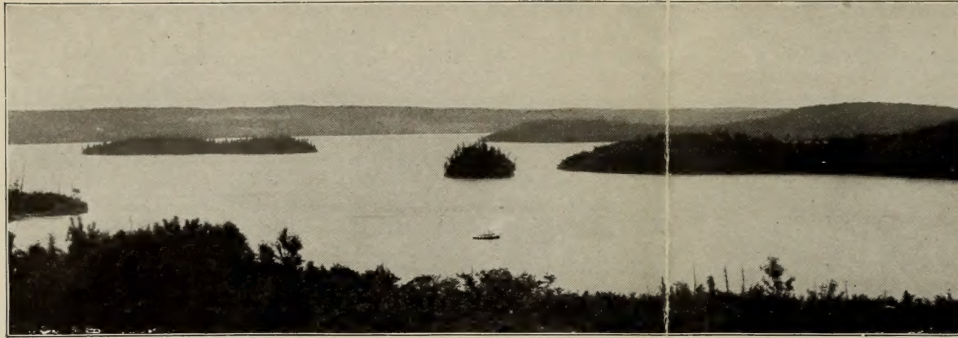
### IMPROVED BOAT SERVICE.

During the past couple of years the Huntsville & Lake of Bays Navigation Company have greatly improved their equipment on these lakes, and are better prepared than ever to take care of the ever-increasing number of tourists who visit this ideal territory. Steamers are operated from about May 1 to Nov. 20 in each season.

Five boats, the "Algonquin," "Iroquois," "Ramona," "Mohawk Belle" and "Minota" have been added to their fleet. The first two named have a speed of sixteen miles an hour, and are unquestionably as fine as any steamers on inland waters. They are equipped for carrying 500 passengers each, lighted with electricity, and each equipped with a powerful searchlight, which adds greatly to the pleasure and interest of trips by moonlight about the lakes. The "Ramona" and "Mohawk Belle," also



# THE LAKE OF BAYS



Haystack Bay—Lake of Bays

lighted throughout with electricity and carrying powerful searchlights, are of lighter draft, for the river and coast service. An attentive stewardess is employed, and a first-class lunch service is operated on the larger boats by the Canada Railway News Co. These boats also have large cold storage refrigerators for carrying meats, fruits, vegetables, etc., for cottages about the lakes.

Close connection is made with the through trains of the Grand Trunk Railway System at Huntsville by the "Algonquin" and "Ramona," which connects with the "Iroquois" and "Mohawk Belle" for Lake of Bays service. The addition of these fine steamers to the fleet enables passengers to reach their destination on the Lake of Bays much earlier than heretofore.

Special rates are in effect during the summer for tourists desiring the sail around the lakes.

The weekly moonlight excursions on the big boats have proved so popular that the management have determined to run them nightly on the lesser lakes and weekly through to the Lake of Bays. The excursion boats carry music and serve light refreshments.

Tourists wishing to make a trip between Lake of Bays and Algonquin Park (via Hollow Lake) will find competent and reliable guides for the trip available. Hollow Lake is noted for its most excellent trout fishing.

## CAMP OTTER—A SUMMER CAMP FOR BOYS.

Possessing, as it does, advantages for all forms of outdoor recreation, the Lake of Bays district has been selected for the location of a number of camps. Among these is "Camp Otter," a camp for boys under the direction of the Physical Director of Cornell University. It is situated on Otter Lake, at an altitude of 1200 feet, and only two miles from Dorset, with its twice-daily boat connection with Huntsville and the Grand Trunk Railway.

All information regarding charges for the full season, as well as an interesting and comprehensive booklet issued in connection with the camp, may be had on application to C. V. P. Young, Cornell University, Ithaca, New York.

## CAMP BILLIE BEAR.

Sixteen miles from Huntsville, on Bella Lake (Sand Lake) is situated a most comfortable log cabin camp with accommodation for ten people. Some of the finest speckled trout fishing is offered in this locality, as well as good bass fishing. The proprietor of this camp knows the best fishing grounds, and visitors

are assured of splendid sport in the locality. In season, excellent deer hunting and partridge are plentiful. Boats and guides furnished on application. Rates \$1.50 per day. Write to D. A. Jackson, proprietor, for further information.

## LUMINA—A SUMMER CAMP FOR GIRLS.

The camp for girls at Lumina is very pleasantly situated at the extreme end of one of the bays. It is three miles from Fox Point and about the same distance from Dwight, where steamers stop regularly.

The camp is open from July 6th to September 1st, and is for girls between the ages of twelve and sixteen. The aim of the camp is to give girls a summer in the open, providing all kinds of out of door sports for the days, and tents to sleep in at night. The sports include swimming, boating, tennis, walks in the woods and short fishing trips. An illustrated booklet telling all about the camp may be had from Miss Harriet A. Beach, 49 Day's Park, Buffalo, N.Y.

## FOR THE HUNTER.

Partridge and duck, as well as other species of game birds, are plentiful throughout the district. To assure success in partridge hunting, dogs are a necessity; guides, however, may be procured who have hunting dogs. Deer, bear and other large game may also be found in abundance, both in this and adjacent districts.

Owing to the Lake of Bays District abutting on the Algonquin Provincial Park (a Government game reservation of over 2,500,000 acres), there will always be good hunting in the district, making it a most desirable place for locating permanent hunters' camps, cottages, etc.

Campers can get supplies from Huntsville, and the guides will supply boats, canoes, etc., at moderate rates. Guides may be secured upon application to the Huntsville & Lake of Bays Navigation Co., Huntsville, Ontario.

## AS A HEALTH RESORT.

For invalids and those suffering from malaria or hay fever, this region is beyond compare. Being situated at an altitude of more than 1,000 feet above sea-level, and over 300 feet above the level of Muskoka Lakes, the air is found to be most invigorating and pure, and its efficacy is pronounced. The many thousands of people who suffer from that most annoying of ailments, "hay fever," will find immediate relief and perfect immunity from the disease at any of the points in the Huntsville and Lake of Bays region.

The waters of the Lake of Bays District are perfectly soft and pure, no traces of lime or alkali being noticeable. Springs abound throughout the district, which pour forth water that has been analyzed and found to compare with the purest of samples.

## COTTAGE SITES.

There are innumerable choice sites available in the Lake of Bays region for those who desire to erect summer homes, camps or cottages. Besides those already enumerated might be men-



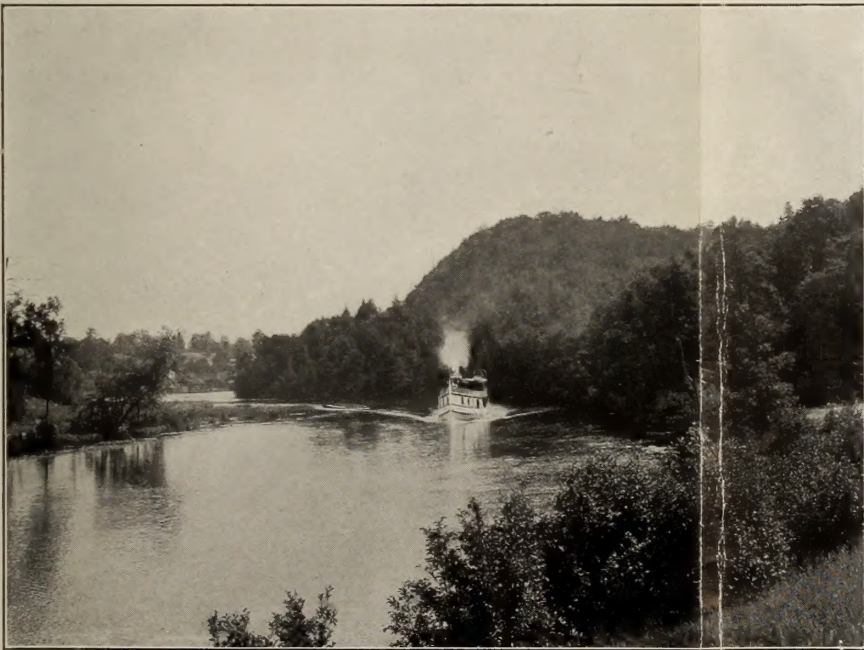
tioned the following: Bigwin Island, comprising about 550 acres, beautifully wooded with timber, both hard and soft woods, and located in the most picturesque part of Lake of Bays, in close proximity to Norway Point, Port Cunningham, Grove Avenue and other resorts. Building sites are for sale on this island in lots of any size. For further particulars address the Bigwin Island Land Company, Ltd., Huntsville, Ontario.

## CUSTOMS AND BAGGAGE ARRANGEMENTS.

Persons visiting Canada for a limited period may bring with them guns, fishing tackle, tents, camp equipment, cameras, bicycles, etc., required for personal use, and such articles must be reported to Canada Customs Inspector when baggage is inspected, and an amount equal to the duty deposited thereon, which amount will be refunded, if the articles are exported from Canada within six months, providing the articles are reported to the Canada Customs Inspector at the time of exportation.

Arrangements have been consummated making Huntsville, Ontario, a Canadian Customs port, providing this place with an officer from June 1st to October 1st, who will examine all baggage, in Huntsville, accompanying tourists from American points. This will remove the very many formerly annoying features pertaining to the prompt clearing of our United States patrons' baggage. Passengers should see that baggage has passed Customs before proceeding on Lake journey to destination.

Passengers should purchase their tickets and have baggage checked right through to destination on Lake of Bays, and see that tickets read via Grand Trunk Railway System to Huntsville and Huntsville and Lake of Bays Line to intended stopping place.



On the Muskoka River

## FISHING NOTICE.

Any non-resident of the Province of Ontario desiring to angle in the waters of the Province must first obtain an angling permit, the fee for which shall be \$2.00 per rod, said permits to be good until the 31st of December of the calendar year and must be produced by the person angling when required to do so by the Overseer or other official authority. When remaining on their own boats and not temporarily residing at hotels or boarding houses, or living in their own cottages, the fee is \$5.00 per rod. The holder of such permit shall be entitled to take with him, when leaving the Province, the lawful catch of two days' fishing, when the coupon accompanying the permit is attached to the receptacle containing the fish, otherwise the fish will be liable to confiscation. These regulations do not apply to the following waters: Niagara River, Detroit River, River St. Clair and St. Mary's River opposite the State of Michigan. Non-residents fishing in these waters will be charged a fee of \$2.00 per rod, whether they are residing in the Province or fishing from their own boats or yachts.

Permits may be obtained from officers of Game and Fisheries or from the Department, Legislative Building, Toronto, Ont. Persons acting as guides for hunting or fishing parties must take out licences. Permits may also be obtained from Mr. Fred A. Haines, Huntsville, Ont.; Mr. C. J. C. Crump, Ronville, Fox Point, Lake of Bays, Ont.; Mr. W. D. Gouldie, Dwight, Lake of Bays, Ont.; Mr. E. B. Speers, Dorset, Lake of Bays, Ont.; and at the Hotel Wawa, Norway Point, Lake of Bays, Ont.

## BOATS, CANOES, ETC.

Boats, canoes and launches can be obtained by writing the following: W. C. Blackburn, Huntsville, Ont.; Jas. W. Ashbury, Dwight, Ont.; W. G. Robinson (Wawa Boat Livery), Norway Point, via Huntsville, Ont.

## HOW TO GET THERE.

From points in the Southern States, passengers reach the Grand Trunk Railway either by way of Buffalo and Niagara Falls or by the way of Detroit, then Grand Trunk Railway to Huntsville.

From Chicago and points in the Western States, passengers are carried over the main line of this great system by way of Port Huron and Toronto.

From points east and south of Buffalo, including the States of New York, Pennsylvania, West Virginia, Maryland, etc., the route is by way of Niagara Falls, thence Grand Trunk. Trains are run from New York and Buffalo over the Lehigh Valley and Grand Trunk, crossing the Grand Trunk's single-arch double-track steel bridge over the Niagara Gorge.

Passengers from Quebec, Portland, Boston and all New England points reach the main line of the Grand Trunk Railway at Montreal, thence to Toronto.

Tourists from the Maritime Provinces reach the Grand Trunk by the Intercolonial Railway via Montreal.

From Toronto fast express trains are run solid to Huntsville, the starting point for the steamer trip to any of the lakes in this district.



# THE LAKE OF BAYS

## HOTELS AND BOARDING HOUSES— SEASON 1915

## LIST OF PRINCIPAL GRAND TRUNK SYSTEM AGENTS

P.O. Address	Name of Hotel or Resort	Proprietor	Accommodation	Rates Per Week
Allansville, Ont.	Boarding House	C. F. Lawrence	10	
Antioch	Camp Billie Bear	D. A. Jackson	40	\$1.50 per day
Baysville	White House	J. Aldred	40	
"	Pulford House	A. J. Henderson	70	6.00 to 10.00
"	Point Pleasant	P. B. Bastedo	75	6.00 to 10.00
"	Idlywld.	Mrs. E. C. Brown	20	6.00 to 10.00
"	Langton House	Jas. L. King	20	
"	Rosebank Farm	Ed. H. Deakin	15	
"	The Hemlocks	W. E. Irwin	30	
Birkendale	Birkendale Summer Resort	W. G. Robson	20	7.00 to 12.00
"	Sea Breeze Cottage	Mrs. W. G. Burk	30	
Brown's Brae	Fairview Farm	John E. Brown	30	
"	Grand View Farm	A. Robinson	25	8.00 to 10.00
"	Glen Mount	J. C. McGarvey	20	
Dorset	The Narrows Hotel	Canada Railway News Co.	75	10.00 to 12.00
"	Ganoseyo	Miss J. L. Persch	60	10.00 to 12.00
"	Barryown Lodge	S. B. Ball	20	12.50
"	Boarding House	G. P. Loucks	30	7.00
"	The Maples	Gid. Burk	15	8.00 to 10.00
"	Mountain Trout House	Jas. Russell	40	
"	Dun-di-si Bay	Mrs. L. A. Westren		2.00 per day
"	Burney Lodge	Mrs. L. A. Westren		10.00 to 14.00
"	Fisherman's Retreat (Hollow Lake)	Miss L. Lopton		7.00 to 10.00
Dwight	Gouldie House	Sawyer	75	
"	Dwight House	A. G. Gouldie	40	
"	Nor Loch Lodge	P. F. Newton	35	
"	Pine Grove Inn	Miss Pauline Morton	50	7.00 to 10.00
Fox Point	Park Place	Harry A. Corbett, Mgr.	15	
"	Island View Cottage	P. B. Walmsley	15	
"	Grove Avenue	Thos. Salmon	30	
"	Port Cunningham	J. B. Robertson	60	6.00 to 9.00
"	Point Ideal	B. H. Cunningham	80	10.00 to 12.00
"	Edgewood Resort	Egbert Boothby	20	10.00
"	Lumina (Camp for Girls)	A. F. Bailey	10	
"	Ronville	Miss H. A. Birch	125	8.00 to 12.00
Hillside	Wequash Resort	C. J. C. Crump	25	6.00 to 7.00
Huntsville	The Grunwald (Mary Lk.)	E. J. Brooks	100	10.00 to 15.00
"	Malvern House (Peninsula Lake)	The Manager	15	1.00 per day
"	Haverland	Mrs. A. M. Conway	40	6.00 to 8.00
"	Riverside	E. Roe	20	
"	Hollingshead	Mrs. McGregor	25	
"	Deerhurst	Mrs. Wm. Hollingshead	75	
"	Grand View	C. W. Waterhouse	65	8.00 to 10.00
"	Hotel Kent	Mrs. L. M. Cookson	50	
"	Fairy Port	W. H. Davis	40	
"	Riverdale	The Manager	10	
Lake of Bays P. O.	Britannia	Fred Waters	150	10.00 to 15.00
Norway Point (via Huntsville) Ont.	Britannia Hall	Thos. J. White	100	15.00 to 25.00
Port Sydney	The "Wawa"	Canada Railway News Co.	300	15.00 to 20.00
"	The Balsams	C. Rumball	35	6.00 to 8.00
"	Chester House	J. Kimball	25	
"	River View	E. A. Watson	20	
"	The Bellevue	Arthur Clarke	50	
"	Clyffe House	Robert Jenner	90	8.00 to 14.00
"	Lake View	Mrs. A. G. McInn's	35	6.00 to 8.00

Where rates are not shown they will be given on request to the proprietor or manager.

**T**HE city of Toronto is the objective point for all traffic for the "Highlands of Ontario"—a beautiful city full of interest to the tourist and sightseer. Each year during the latter part of the summer the Toronto Industrial Exhibition, which is considered to be the best annual affair on the continent, is held here and is well worth a visit. In 1915 the Exhibition will be held from August 28th to September 13th.

<b>Battle Creek, Mich.</b>	L. J. BUSH, Passenger Agent, G.T. Ry. Station.
<b>Bay City, Mich.</b>	GEO. W. WATSON, Passenger Agent, G.T. Ry. Station.
<b>Boston, Mass.</b>	E. H. BOYNTON, New Eng. Pass. Agt., 256 Washington St.
<b>Brockville, Ont.</b>	J. H. FULFORD, Ticket Agent, 8 Court House Ave.
<b>Buffalo, N.Y.</b>	H. M. MORGAN, City Pass. and Ticket Agent, 285 Main St. (Ellcott Square Building).
<b>Chicago, Ill.</b>	C. G. ORTENGURGER, City Pass. & Ticket Agent, 301 South Clark St., corner Jackson Boulevard.
<b>Detroit, Mich.</b>	R. McC. SMITH, City P. & T. Agt., 118 Woodward Ave.
<b>Edmonton, Alta.</b>	J. F. PHILP, City Pass. Agt., 153 Jasper Ave., E.
<b>Flint, Mich.</b>	V. A. BOVEE, Passenger Agent, G.T. Ry. Station.
<b>Grand Rapids, Mich.</b>	C. A. JUSTIN, City Pass. and Tkt. Agt., 78 Monroe Ave., Morton House Block.
<b>Hamilton, Ont.</b>	C. R. MORGAN, City Pass. & Tkt. Agt., 11 James St., N.
<b>Kansas City, Mo.</b>	C. N. WILSON, Trav. Pass. Agt., 340-342 N.Y. Life Bldg.
<b>Kingsbury, Ont.</b>	J. P. HANLEY, City Pass. and Ticket Agent, corner Johnston and Ontario Sts.
<b>Lansing, Mich.</b>	F. H. POTTER, Passenger Agent, G.T. Ry. Station.
<b>Lewiston, Me.</b>	F. P. CHANLER, Passenger Agent, G.T. Ry. Station.
<b>London, Ont.</b>	R. E. RUSE, City Passenger & Ticket Agent, cor. Richmond and Dundas Sts.
<b>Los Angeles, Cal.</b>	W. H. BULLEN, Pacific Coast Agent, 302 Wilcox Bldg.
<b>Milwaukee, Wis.</b>	CROSBY TRANS. CO., 396 East Water Street.
<b>Moncton, N.B.</b>	J. H. CORCORAN, Travelling Passenger Agent, 9 Wyse Bldg., Main St.
<b>Moose Jaw, Sask.</b>	A. W. IRWIN, City Pass. Agent, cor. Main and High Sts.
<b>Montreal, Que.</b>	J. QUINLAN, District Pass. Agt., Bonaventure Station.
<b>Mt. Clemens, Mich.</b>	CASPER CZIZEK, C.P. and T. Agt., 12 S. Gratiot Ave.
<b>New York, N.Y.</b>	F. P. DWYER, Gen. Agent Pass. Dept., Railway Exchange, 290 Broadway.
<b>Niagara Falls, N.Y.</b>	W. B. PRESCOTT, City Pass. and Ticket Agt., 1 Falls St.
<b>Ogdensburg, N.Y.</b>	GEO. S. MEAGHER, Ticket Agent, 55 State St.
<b>Ottawa, Ont.</b>	PERCY M. BUTLER, C.P. & T.A., Russell House Bldg., Cor. Sparks and Elgin Streets.
<b>Peterboro, Ont.</b>	B. A. ROSE, City Pass. and Tkt. Agt., 334 George St.
<b>Pittsburg, Pa.</b>	A. B. CHOWN, Trav. Passenger Agt., 507 Park Bldg.
<b>Port Arthur, Ont.</b>	S. W. RAY, 12 Cumberland Street.
<b>Port Huron, Mich.</b>	T. C. MANN, Ticket Agent, G.T. Ry. Station.
<b>Portland, Me.</b>	C. E. TENNY, Passenger Agent, G.T. Ry. Station.
<b>Portland, Ore.</b>	DORSEY B. SMITH, City Pass. and Tkt. Agt., 116 Third St., cor. Washington.
<b>Prescott, Ont.</b>	P. B. WHITELEY, Ticket Agent, Centre Street.
<b>Prince Rupert, B.C.</b>	ALBERT DAVIDSON, General Agent, 526 Third Avenue.
<b>Quebec, Que.</b>	GEO. H. STOTT, City Pass. and Tkt. Agt., cor. St. Anne and DuFort Sts., and Ferry Landing, Dalhousie St.
<b>Regina, Sask.</b>	W. G. POWELL, City Pass. Agt., 1829 Scarth St.
<b>Saginaw, Mich.</b>	HUGH E. QUICK, Passenger Agent, G.T. Ry. Station.
<b>San Francisco, Cal.</b>	F. W. HOPPER, Gen. Agent Pass. Dept., 687 Market St.
<b>Saskatoon, Sask.</b>	A. F. LENON, City Passenger Agt., 117 2nd Avenue.
<b>Seattle, Wash.</b>	J. H. BURGIS, General Agt. Pass. Dept., 917 Second Ave.
<b>Sherbrooke, Que.</b>	G. A. HARRISON, City Pass. & Tkt. Agt., 2 Wellington St.
<b>South Bend, Ind.</b>	C. A. MCNUTT, Passenger Agent, G.T. Ry. Station.
<b>St. Paul, Minn.</b>	W. J. GILKERSON, General Agt., Passenger Dept., 400 Robert St.
<b>Toronto, Ont.</b>	C. E. HORNING, Dist. Pass. Agent, Union Station.
<b>Vancouver, B.C.</b>	C. E. JENNEY, Gen. Agt. Pass. Dept., 527 Granville St.
<b>Victoria, B.C.</b>	C. F. EARLE, City Passenger and Ticket Agent, G.T.P. Dock.
<b>Winnipeg, Man.</b>	W. J. QUINLAN, District Pass. Agt., Union Station.

## EUROPEAN TRAFFIC DEPARTMENT

F. C. Salter, European Traffic Manager, 17-19 Cocksspur St., London, S.W., Eng.

<b>Amsterdam and the Hague, Holland</b>	MESSRS. HOYMAN & SCHURMAN, Gen. Passenger and Tourist Office.
<b>Antwerp, Belgium</b>	P. A. CLEWS, Acting General Agent, 19-21 Canal des Brasseurs.
<b>Birmingham, Eng.</b>	MORISON, POLLEXFEN & BLAIR, No. 6 Victoria Square.
<b>Glasgow, Scotland</b>	J. M. WALKER, General Agent, 75 Union Street.
<b>Liverpool, Eng.</b>	WM. CUTHBERTSON, General Ass't., 20 Water St.
<b>London, S.W., Eng.</b>	J. HERSON, Gen. Agt., Pass. Dept., 17-19 Cocksspur St.
<b>London, E.C., Eng.</b>	P. A. CLEWS, City Agent, 44, 45 and 46 Leadenhall St.
<b>Paris, France</b>	PITT & SCOTT, Ticket Agents, 47 rue Cambon.
<b>Sheffield, England</b>	J. W. DAWSON, Agent, No. 7 Haymarket.

Thos. Cook & Son,  
All offices, Europe and other parts of the world.

<b>G. T. BELL,</b> Passenger Traffic Manager, MONTREAL, QUE.	<b>W. P. HINTON,</b> Ass't. Pass'r. Traffic Manager, MONTREAL, QUE.
<b>W. S. COOKSON,</b> Assistant General Passenger Agent, MONTREAL, QUE.	<b>J. D. McDONALD,</b> Assistant General Passenger Agent, CHICAGO, ILL.